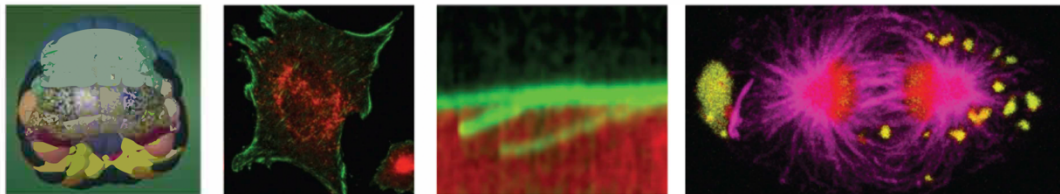


The CRBM is recruiting new group leaders

The CRBM (crbm.cnrs.fr) is a research institute located in Montpellier, in Southern France, internationally renowned in the fields of cell biology and biochemistry. The institute sits within a multidisciplinary campus of the French National Centre for Scientific Research (CNRS). Research at the institute covers fundamental aspects of biology, including cell division, adhesion, post-translational modifications and signalling, structural bioinformatics and molecular modelling gene regulation, cytoskeleton and lipid biology, cancer, and systems biology.



The CRBM is recruiting a new group leader to establish a world-class research program in an interactive and supportive environment. All projects with the potential to synergize with CRBM topics will be considered, with particular interest in interdisciplinary approaches to tackle biological mechanisms involving chemical biology, mathematical modelling, cell physics and instrumental development in optics

For applicants without permanent position, preference will be given to young researchers who obtained their PhD more than two and less than eight years ago, who will thus be able to apply to the CNRS ATIP and ERC starting grant programs. Selected group leaders will be assisted in obtaining permanent tenured positions at the CNRS and in securing funding through competitive national and international grant calls. We also welcome applicants with permanent CNRS position and secured funding.

Applications should include a CV, a research project and two recommendation letters sent to Claude Prigent before April 1st 2024.

Selected group leaders will receive laboratory space and will benefit from an exceptional scientific and technological environment, thanks to the UMS Biocampus, which provides access to 18 Montpellier's technological platforms (proteomics, genomics, mouse animal facility, etc.). The institute hosts three Biocampus platforms: the MRI Montpellier Resource Imaging platform, the MGC Montpellier Genomic Collections platform and the ZEFIX Zebrafish and Xenopus Platform, which can be found on the website (<https://www.biocampus.cnrs.fr>).

CRBM is supported by the CNRS and the University of Montpellier. It is composed of 18 research groups, one R&D team and one start-up bringing together 160 staff members and students. CRBM interacts closely with neighboring CNRS biology institutes on the same campus, CEMIPAI (facility in infectiology) IRIM (Research in infectiology) and IGMM (research in molecular genetics), bringing together 450 biologists currently working to set up a Research Federation. Next to CRBM there are additional CNRS institutes dedicated to ecology (CEFE) and to chemistry (Balard) with an additional of 900 researchers.

Montpellier hosts 75 research institutes performing world class research, an excellent University with a vibrant student population and one of the world's oldest medical schools.

Montpellier is a dynamic and attractive Mediterranean city in an exceptional environment between the sea and the mountains with 300 days of sunshine per year.



Contact: claud.prigent@crbm.cnrs.fr, direction@crbm.cnrs.fr

Mobile : +33(0)631122757

www.crbm.cnrs.fr