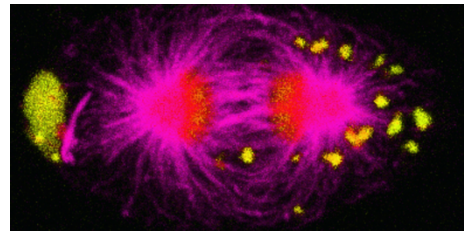
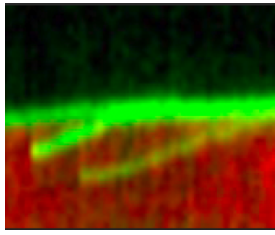
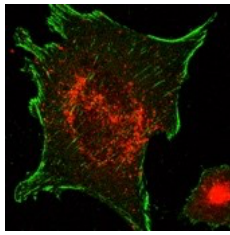
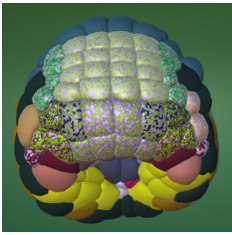




## The CRBM is recruiting new group leaders

The CRBM ([crbm.cnrs.fr](http://crbm.cnrs.fr)) is a research institute located in Montpellier, in Southern France, internationally renowned in the fields of cell biology and biochemistry. The institute sits within a multidisciplinary campus of the French National Centre for Scientific Research (CNRS). Research at the institute covers fundamental aspects of biology, including cell division, adhesion, post-translational modifications and signalling, structural bioinformatics and molecular modelling gene regulation, cytoskeleton and lipid biology, cancer, and systems biology.



**The CRBM is recruiting on an ongoing basis, new group leaders to establish a world-class research program in an interactive and supportive environment. All projects with the potential to synergize with CRBM topics will be considered, with particular interest in interdisciplinary approaches to tackle biological mechanisms involving chemical biology, mathematical modelling and cell physics.**

For applicants without permanent position, preference will be given to young researchers who obtained their PhD more than two and less than eight years ago, who will thus be able to apply to the CNRS ATIP and ERC starting grant programs. Selected group leaders will be assisted in obtaining permanent tenured positions at the CNRS and in securing funding through competitive national and international grant calls. We also welcome applicants with permanent CNRS position and secured funding.

Applications should include a CV, a research project and two recommendation letters.

Selected group leaders will receive laboratory space and access to 16 state-of-the-art technological platforms in Montpellier (<https://www.biocampus.cnrs.fr/index.php/fr/>), including a cutting-edge imaging facility hosted by CRBM (<http://www.mri.cnrs.fr>). CRBM benefits from state-of-the-art in-house aquatic animal facilities (ascidians, zebrafish, xenopus), as well as transgenic mice facility on site (PCEA Biocampus).

CRBM is supported by the CNRS and the University of Montpellier. It is composed of 16 research groups, one R&D team and one start-up bringing together 170 staff members and students. CRBM interacts closely with neighbouring CNRS institutes on the same campus, biological institute IRIM (infectiology) and IGMM (molecular genetics), bringing together 450 biologists. Next to CRBM there are additional CNRS institutes dedicated to ecology (CEFE) and to chemistry (Balard) with an additional of 900 researchers.

Montpellier hosts 75 research institutes performing world class research, an excellent University with a vibrant student population and one of the world's oldest medical schools.

Montpellier is a dynamic and attractive Mediterranean city in an exceptional environment between the sea and the mountains with 300 days of sunshine per year.



Contact: [direction@crbm.cnrs.fr](mailto:direction@crbm.cnrs.fr)

CRBM – CNRS UMR 5237

1919, route de Mende, 34293 Montpellier Cedex 5, France

Ph: +33(0)434359579, Fax:+33(0)434359410

[www.crbm.cnrs.fr](http://www.crbm.cnrs.fr)