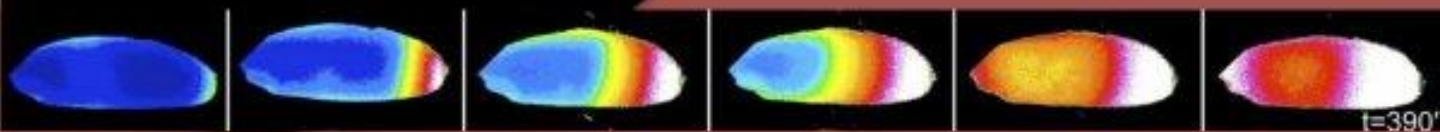


$$\frac{dC_{em}}{dt} = f_{em}(J_{in} + \delta J_{CX} - \delta J_{MCU})$$



## SPATIO-TEMPORAL ENCODING AND DECODING IN CELL SIGNALING

**Invited speakers:** Jacques-Alexandre SEPULCHRE, Nice, France - Joseph D'ALESSANDRO, Paris, France – Hugues BERRY, Grenoble, France – Ursula KUMMER, Heidelberg, Germany - Olivier PERTZ, Bern, Switzerland - Madalena CHAVES, Sophia-Antipolis, France – Eric REITER, Tours, France - Margaritis VOLIOTIS, Exeter, UK

March 20<sup>th</sup>, 2020

BioPark  
11 rue Watt, 75013 Paris

**Organizers:**  
Frédérique CLEMENT, INRIA-Saclay  
Laurent COMBETTES, Orsay  
Geneviève DUPONT, Bruxelles